

ALViS

Alarm Visualization System

Version 4.1 New Features

WE ARE ON THE TOP

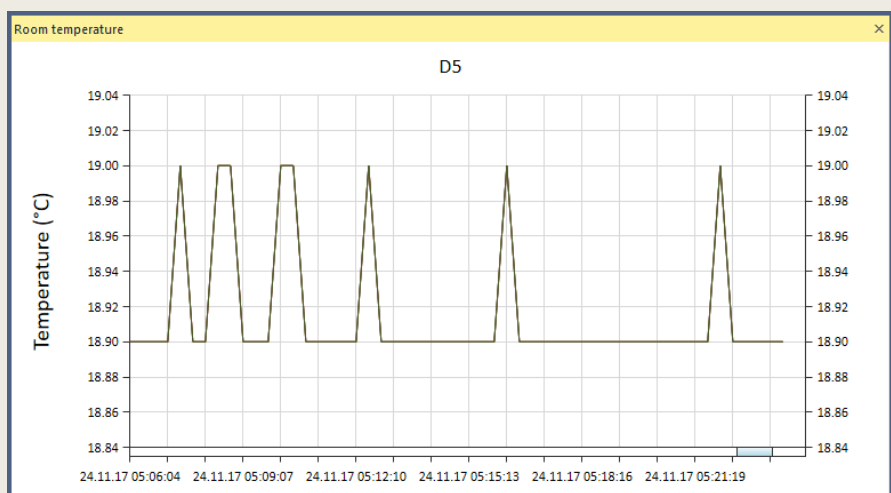
- **feature**
- **innovation**
- **support**
- **price**

New AutoCAD formats

- Since version 4.1 ALViS supports DWG formats higher than "AC1018" (year 2004 - 2006)
- Support of old DWG formats (format = <AC1018) remains included free of charge, the latest DWG formats (>AC1018) support provided at extra cost, ALViS recognizes the DWG version and uses the appropriate library
- Functions of DWG layer selection as well as DWG symbols and text import are available

New charts

- New ALViS Window menu "Chart Area" and "Chart Window" to display real-time as well as historical values in the form of a bar chart (temperature, humidity, pollution ..)
- Requires ALViS CD license with installed Central Database SQL server, values are stored in DB by external driver
- Each object can display one line only (current line) from the list of lines for this object (defined in Development mode)
- The current line and time interval can be selected in Runtime mode
- Charts includes Zoom and Scroll functions



AIViS

Alarm Visualization System

Version 4.1 New Features

WE ARE ON THE TOP

- **feature**
- **innovation**
- **support**
- **price**

New licensing system Sentinel LDK

AIViS 4.1 includes support of old SuperPro USB dongle (due to upgrades of old AIViS versions) as well as the new LDK in HASP HL/USB dongle version and software SL version.

New LDK HL/SL features and advantages

- HL/USB does not need driver installation
- HL/USB includes /TIME and /FLASH at extra cost
- HL/USB enabling RD and SL VM/RD feature at extra costs
- Higher security level (AppOnChip)
- HL/SL has higher memory for licensing (4KB) enabling
 - Until 60 different program licenses in one dongle available
 - The new DWG format will be extra licensed
 - Expiration date in /TIME HL will be available
 - „RD“ and „VM“ feature extra licensed

New LDK restrictions

- HL / USB not available on (VM) Virtual Machine
- SL not available in NET version
- Windows upgrade not recommended where SL installed
- HW changes on PC with SL installed not recommended



HL MAX

- HL Micro

- HL Time

- HL Net

- NetTime

- HL Flash

ALViS

Alarm Visualization System

Version 4.1 New Features

WE ARE ON THE TOP

- **feature**
- **innovation**
- **support**
- **price**

OTHER FEATURES

- ALViS - Scheduler improvements
 - Automatic export\import of Scheduler data
 - Disabled actions are red in Detail window
 - Scheduler action name can be renamed
 - Year can be defined for a holiday
- Simple plan Zoom and Pan mode
 - Plan can be zoomed and scrolled by the mouse wheel and the left button without pressing the mouse wheel button first in the runtime mode
 - It must be defined in ALViS.ini (zoom section)
- Some minor bugs removed

